

# CCMS

## Centralized Campus Management System

- ▶ Student Life Cycle
- ▶ Faculty Life Cycle
- ▶ Campus Administration



**22+**

Years of  
Experience



**2200+**

Educational  
Institutions



**10+**

Million  
Users

**Most Trusted Partner For Driving Digital Transformation Across  
Educational Institutions.**

## MasterSoft, Your Academic Partner

MasterSoft ERP Solutions provides e-governance solutions, exclusively to educational institutions. Having worked with various schools, colleges, autonomous and non-autonomous institutions, universities and societies over the last 22 years we understand the distinct requirements of education sector.

Our Solutions have evolved over the years, drawing inspiration from visionaries and educationists, incorporating the changes in education & technology to ensure best quality and utmost value addition to student learning and campus administration.

We are a team of over 300 individuals working towards a common goal of Academic Excellence.

## One Stop Solution That Streamlines Your Present Activities And Makes You Future Ready!

**1**

### Complete Control & Transparency

- Streamlined System Driven processes with checks & alerts
- 24\*7 Accessibility – Mobile, PCs, Tablets etc
- Powerful Analytics Dashboards & Comprehensive Reports.

**2**

### Reduced Workload & Costs

- No Need for Queues, supports 100% Cashless Operations
- System Driven Compliance Reports
- All activities maintained in ERP, no need for different files.

**3**

### Future Readiness

- 100% Free Upgrades
- Access to Best Practices across Institutions Pan – India
- Aligned with Govt Regulations and Future Requirements.

**4**

### 100% Data Security

- Hosted on Secure Cloud Servers (Meghraj Policy)
- Multiple Backups
- Password Encryption, Role-Based Access, etc.

# ACADEMIC MODULES

## Online Registration & Admissions

- Custom Institute Registration Form
- Online Application by Students
- Application Processing and Merit List Generation
- Online Admission and Fees Collection
- SMS, Email Student Communication Triggers

### Reports

- ▶ Registered Student List
- ▶ Merit list- General, Category-wise, and Quota
- ▶ Online Admission Register
- ▶ Current Admission Position
- ▶ Admission Cancellation Report
- ▶ MIS Reports According to Fee Type, Medium, Gender, Caste, Category, Religion, Region

## Fees Collection

- Fee Demand Creation for different Student Types
- 24\*7 Online Payment with Feepayr
- Multi-mode payments – Credit/ Debit Cards, Net banking, UPI, Wallets etc.
- Direct payment into Institute's bank account
- Cash fee collection on campus
- Create Instalments, Concessions, scholarships etc

### Reports

- ▶ e-Receipts of Fee Payments
- ▶ Fee Collection Reports
- ▶ Outstanding Fee Reports
- ▶ Daily & Monthly Collection Registers
- ▶ Student Fee Ledger
- ▶ Late Fine & Caution Money Report
- ▶ Concession and Refund Reports
- ▶ Auto-Generated Daily, Weekly, Monthly Fees and Admission Reports to College Management via Email

## Student Attendance & Timetable

- Class/ Course Timetable
- Course – Teacher Allotment
- Course Registration
- Timetable linking faculty, students, classroom and subject for attendance
- Automated attendance through Mobile Apps & QR Code
- CBCS System integration for weekly master timetable
- SMS/Emails Notification

### Reports

- ▶ Timetable According to Course, Teacher & Classroom
- ▶ Attendance Reports: According to Subject, Faculty, Class
- ▶ Poor Attendance Report & Undertaking Report
- ▶ Attendance Analysis According to Subject, Faculty, and Class
- ▶ MIS Reports According to Fee Type, Medium, Gender, Caste, Category, Religion, Region

## Student Administration & Record

- Student Ledger Management
- Roll list, Admission Register & other Reports
- Identity Card & Certificates
- Academic Calendar
- Academic Performance Analysis
- Feedback

### Reports

- ▶ Identity Card & Certificates like TC, Bonafide, NOC, DOB, Attempt
- ▶ University/Government/Accreditation Reports
- ▶ College Data Export to Excel
- ▶ MIS Reports According to Faculty, Medium, Gender, Caste, Category
- ▶ Student Lists Management for Colleges
- ▶ Subject/Class-wise Attendance Sheet
- ▶ Document Submission Report Reports

## Examination & Results

### Pre-Examination

- Exam Registration by Students & Approval
- Exam Roll No. Allotment & Hall Tickets
- Exam Timetable, Seating Arrangements, Exam Attendance Sheet
- Invigilation Duty Assignment
- Pre-Exam Reports Provision to withhold hall tickets

### Post Examination Work

- Marks/Grade Entry by Valuer
- Grading criteria /Passing Scheme Definition
- Finalization of marks Class-Moderation
- Result Preparation & Publishing – Grade, SGPA & CGPA calculation
- Re-exam/Revaluation/Grievances
- Provision to withhold grade cards

### Reports

- ▶ Pre-Exam Reports
- ▶ Result Gazette
- ▶ Result Analysis Reports & Graphs
- ▶ Performance Report
- ▶ Class Topper List/Merit List
- ▶ Subject-wise Topper List
- ▶ Grade sheet Cards/Mark
- ▶ Transcript
- ▶ Provisional Degree
- ▶ Convocation Reports

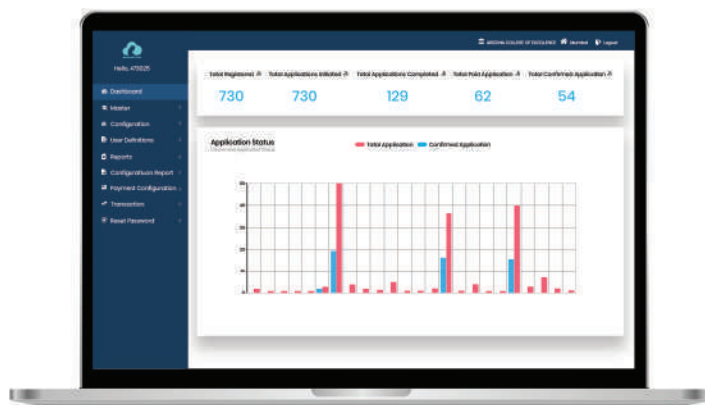
# NON-ACADEMIC

## Finance & Accounts

- Creation of Cash Book
- Accounts Entry – Voucher – Cash / Bank / JV
- Fees & Payroll – Consolidated Transfer
- Final Accounts
- Payment and JV entries
- Bank reconciliation
- Cheque Printing

## Reports

- ▶ Vouchers
- ▶ Cash-Bank-JV-Day books
- ▶ Party Ledgers
- ▶ Trial Balance
- ▶ Balance Sheet
- ▶ Receipt & Payment
- ▶ Income & Expenditure statement
- ▶ Schedules
- ▶ Cheque Printing and Reports



## HRMS

- Employee Information Management
- Biometric and QR based Attendance Automation
- Leaves & OD
- Compute monthly pay bills & supplementary bills, income tax & PF module
- 20 earning & 30 deduction pay heads
- Service book
- Appraisals
- Employee Exit

## Payroll Management Reports

- Pay Slips & Salary Certificates
- Salary Register & Abstract
- Bank Statements
- Schedules of Deductions-PT, LIC
- Income Tax Report & Form 16 24Q
- Annual Salary Reports
- MIS Reports Generation

## Attendance & Leave Reports

- Date-wise, Month-wise Leave & Attendance Reports
- Daily Absentee Reports
- Continuous Absentee Reports
- Department-wise Leave & Attendance Reports
- Service Book
- Collection, Organizing, Managing and Analysing important institutional information

## Library

### Acquisition & Cataloguing

- Invoicing, Accessioning & Payments
- Binding, Write-off & Stock Verification
- Barcode Generation
- AACR2 Catalogues
- Budget Utilization Analysis

### Circulation

- Issue, Return & Renewals
- Reservation/Claims
- Overdue/Recall Notice, Reminders
- Clearance & Fines
- Book Bank
- Reference Book Circulation

### Serial Controls

- Binding, Accessioning
- Indexing
- Circulation
- Serial OPAC
- Newspapers
- MIS Reports

## MIS Reports

- Utilization of Documents
- Budget Analysis
- Reservation/Claims Analysis
- Graphical Reports
- Analysis of Documents- According to Various Parameters
- Summary of Documents – in Binding, Present, issued

## M-OPAC Mobile App

- Multilingual Book Search App
- Libraries can upload and update Book data on M-OPAC Cloud
- Access to book details of one/all registered Libraries
- Global Search utility
- Non-computerized libraries

# SPECIALS

## Accreditation Data Management System

- Manage Academic Details, Student Information, Faculty and Staff - Profile and Research
- Infrastructure & Learning Resources, Finance
- Feedback system, Alumni
- Maintain supporting Documents with Time Stamps
- Access complete records at click

## OBE – Outcomes Based Education

- Vision, Mission & OBE framework Definition
- PO, PEO's, CO & Mapping
- Assessment Weightage Setup
- CO Attainment Thresholds Setup
- CO Mapping to Questions
- Assignments/Survey Creation, Mapping to CO, Evaluating, and Analysis

## Reports

### OUTCOMES ATTAINMENT

- ▶ CO-PO calculation using Direct & Indirect Assessment
- ▶ Assignment Level/ Question-wise Report
- ▶ Performance Report
- ▶ PO Coverage Report
- ▶ Yearly Attainment of POs
- ▶ CO/ PO Attainment Report & Cause Analysis
- ▶ Student-wise Attainment, Course Level Attainment

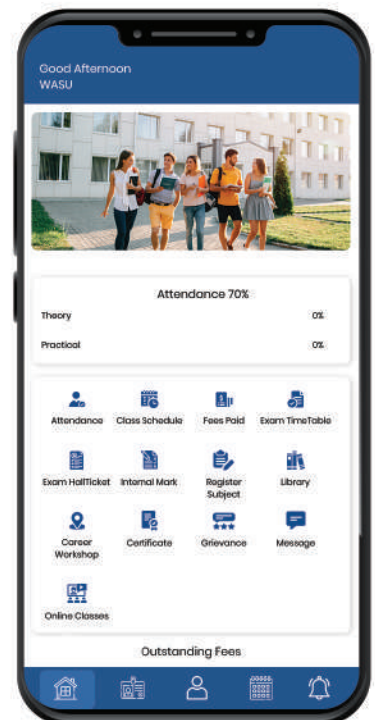
## Learning Management System (LMS)

- Online Assignment Scheduling & Assessment
- Syllabus & Teaching Plan Creation
- Teacher Student Discussion Forum
- Online Assessments: MCQs, Descriptive Tests, OTP Based, Question Bank Creation, Schedule Tests
- E-Content Upload
- Online Lecture: Google Meet Platform & Lecture Notes Integration

## Online Proctored Examination

### Conduct MCQ & Descriptive Exams in online proctored environment

- Invigilator Monitoring
- Randomization of Questions as per Multiple Sets & Option Shuffling (MCQ)
- Browser and Image-based Monitoring of Student Activities
- Mock Test & Counselling of Students for Exam
- Descriptive exams with answer upload facility
- MIS Reports, Exam Analysis & Analytics for Exam Team
- Mobile Apps based Examination



## Choice based Credit System (CBCS)

- Offers three course choices to the students - Core, Elective, and Foundation
- Facilitates 10-point Credit grading system
- Multiple Entry Exit in line with NEP 2020 - Minor Degree, Dual Degree, Honor
- Multiple Admission batches in same Academic Year & Overlapping Semester
- Conceptualized with 'Academic Bank of Credits' - Credit Mobility, Exemption & Transfer
- Branch Sliding for students based on preferences
- Add & Drop Window to students for Courses; Term drop facility
- Master Timetable Generation
- Hassle-Free Selection of Subjects
- Course Creation & Allocation
- Id-Card, Hall-Ticket, And Report Card Generation

“Custom Power BI Drill Down Dashboards for Administration”

# “ Get Ready for Accreditation with MIS Reports ”

## GET IN TOUCH

[www.iitms.co.in](http://www.iitms.co.in)

Email: [sales@iitms.co.in](mailto:sales@iitms.co.in) | [janki.somani@iitms.co.in](mailto:janki.somani@iitms.co.in)

Landline Number: 0712-3502100

Gaurav : +91-8605616111 | [gaurav.somani@iitms.co.in](mailto:gaurav.somani@iitms.co.in) | Mustak : +91-8308831025 | [mustak@iitms.co.in](mailto:mustak@iitms.co.in)

Presales: +91-8448010216 | +91-7770012735 | [presales@iitms.co.in](mailto:presales@iitms.co.in)

Offices : Nagpur | Mumbai | Chennai

This brochure shows overall contents & features of the Current CCMS Cloud ERP – in general. These features & contents are continuously upgraded based on - feedback, Technological changes & Security challenges. So Actual ERP system provided to your Campus may not have all the contents given in this Brochure & may also differ based on - your Campus requirements & our offer. Therefore, all features & contents listed above may not be the part of ERP provided to your Campus.

### Our Presence At

- Mumbai
- Nagpur
- Chennai
- Jaipur
- Delhi
- Coimbatore
- Hyderabad
- Bengaluru
- Ahmedabad
- Srinagar
- Noida
- Indore
- Goa
- Patna
- Surat
- Bhopal
- Raipur
- Bhubaneswar
- Agartala
- Pune
- Jamshedpur
- Jalgoan
- Aizawl
- Latur
- Imphal
- Aurangabad
- Bagalkot
- Karad
- Palakkad
- Mysore
- Kolhapur

1. Alumni Portal
2. Samarth Portal (ERP,Online DashBoard, TimeTable ,Exam evaluation )
3. Student Services (Attendance,Academic record,Hostel etc.

Give Quotation and Price of All Modules.

▪ **Core™ i7-12700 (Vpro)      PRICE:75000/- Approx**

- 8GB RAM
- 512GB PCIe® NVMe™ M.2SSD
- Windows 11 Pro.
- DVD RW
- Intel® UHD Graphics 770
- Intel® H670 Chipset
- 19.5" Monitor
- 3 Years Warranty

.....

▪ **Core™ i5-12500      PRICE:60000/- Approx**

- 8GB RAM
- 512GB PCIe® NVMe™ M.2SSD
- Windows 11 Pro.
- DVD RW
- Intel® UHD Graphics 770
- Intel® H670 Chipset
- 19.5" Monitor
- 3 Years Warranty

**INTERACTIVE FLAT PANEL DISPLAY      PRICE : 2,00,000**

FEATURES • Ultra Resolution Output. • Zero bonding technology for natural writing experience. • Front audio stereophonic speakers. • Industrial grade aluminium frame. • Multiple signal input HDMI, SPDIF, RS232, AV I/O, Earphone. • Infrared touch technology for rich writing experience. • Password Lock protected. • 450cd/m<sup>2</sup> high brightness. • Built in Android OS with optional Windows 10 OS . • 4mm protection and anti-scratch glass. • 20 Point Touch, ≤5ms response.

# Shri Ramdev Computers

## Computer Sales & Service

Aditya Plaza, Near Regal Cinema, Dayaram Road, LATUR, Ph.02382-242424, Mob. 9422071538

Email : harishlatur@gmail.com

Quotation

Ref. No.

Date : 25-08-2023

To,  
The principal  
Dayanand College of Commerce  
Latur

Sub- Quotation for Hp Desktop  
Dear Sir

Rates As under

### 1. HP 280 G6 MT DESKTOP ( I5 10<sup>th</sup> )

Intel Core I5 10<sup>th</sup> gen (10500)  
8 GB Ram / 250gb WD Nvme Hdd + 1TB hard Disk  
**Windows 11 Home**  
Keyboard + Mouse  
Warranty 3 Years by HP

1no 43700=00

### 2. HP 280 G9 DESKTOP ( I5 12<sup>th</sup> )

Intel Core I5 10<sup>th</sup> gen (12500)  
8 GB Ram / 512gb Hard Disk  
**Dos / Wifi + Bluetooth**  
Keyboard + Mouse  
Warranty 3 Years by HP

1no 50,100=00

### 3.Hp 19.5" Monitor

Warranty 3 Years by HP

1no 6950=00

- Rates Are Including GST.
- Warranty As Per Company Rule.
- No Warranty On Burning Goods.
- Price are including INSTALLATION.
- Rates For 10+ Qty



25/08/2023



# Quotation for Desktop Computers as per GEM Portal (3<sup>rd</sup> and 4<sup>th</sup> Computer in the given screen shot)

The screenshot displays a web browser window with the URL [mkp.gem.gov.in/computers-desktop-computer/search](http://mkp.gem.gov.in/computers-desktop-computer/search). The browser's address bar and tabs are visible at the top. Below the browser, there are four product cards for desktop computers. Each card includes a product image, a title, specifications, seller information, a rating, and pricing details.

Product Name	Specifications	Brand	Min. Qty. Per Consignee	Current Price (₹)	Discount (%)	Original Price (₹)
hp Intel Core i7 11700 32 GB/ 1000 GB HDD/ ...	hp Intel Core i7 11700 32 GB/ 1000 GB HDD/ ...	hp	1	11,863.09	90%	118,630.90
hp AMD Ryzen 5 5600G 8 GB/ 1000 GB HDD/ ...	hp AMD Ryzen 5 5600G 8 GB/ 1000 GB HDD/ ...	hp	1	47,737.53	56%	108,759.00
hp AMD Ryzen 5 5600G 16 GB/ 1000 GB HDD/ ...	hp AMD Ryzen 5 5600G 16 GB/ 1000 GB HDD/ ...	hp	1	49,798.00	52%	103,401.00
hp Intel Core i7 10700 16 GB/ 0 GB HDD/ ...	hp Intel Core i7 10700 16 GB/ 0 GB HDD/ ...	hp	1	84,885.00	36%	133,086.00

At the bottom of the browser window, there is a navigation bar with 'Ask GeMmy' and 'Product History 3'. The Windows taskbar is visible at the very bottom, showing the search bar, taskbar icons, and system tray information including temperature (25°C Haze), time (10:02), and date (28-08-2023).

# Model No. T29832-A

android 11



Upgradable To  
**Android 13**



## FEATURES

- Ultra Resolution Output.
- Zero bonding technology for natural writing experience.
- Front audio stereophonic speakers.
- Industrial grade aluminium frame.
- Multiple signal input HDMI, SPDIF, RS232, AV I/O, Earphone.
- Infrared touch technology for rich writing experience.
- Password Lock protected.
- 450cd/m<sup>2</sup> high brightness.
- Built in Android OS with optional Windows 10 OS .
- 4mm protection and anti-scratch glass.
- 20 Point Touch, ≤5ms response.



## TECHNICAL SPECIFICATION

### LCD Panel

Diagonal Size	85"
Bonding Technology	Zero Bonding
Aspect Ratio	16:9
Pixel Pitch	0.4928 (W) x 0.4928(H)
Response	≤5ms
Resolution	3840 x 2160 pixels
Contrast Ratio	5000:1 Dynamic, 1200:1 Static
Brightness(cd/m2)	450cd/m <sup>2</sup> ±5%
Display Area	1872 mm (W) x 1053 mm (H)
Color	16.7 million colors
View Angle	<b>H:178° V:178°</b>
LED Lifespan	60,000* hours

### System

OS	Android 11 (Upgradable to Android 13)
CPU	Amlogic T982, Quad core ARM Cortex-A55 CPU, 1.9GHz
GPU	Mali-G52 MP2(2EE)
RAM	4GB
Storage	64GB
OSD Language	English
Video Format	PAN, NTSC
Optimum Resolution	3840 x 2160 pixels @ 60 HZ

Support Resolution	3840 x 2160, 1920 x 1080, 1680 x 1050, 1600 x 1200, 1440 x 1050, 1360 x 768, 1280 x 1024, 1280 x 768, 1024 x 768, 832 x 624, 800 x 600, 720 x 400, 600 x 480
Video Format	480i, 480p, 576i, 576p, 720p, 1080i, 1080p, 4K
<b>I/O Port</b>	
Rear Input	HDMI2.0 x 2, USB3.0 x 1, USB2.0 x 1, SPDIF x 1, Rs232 x 1, Touch USB x 1, Rj45 Earphone x 1, Coaxial x 1, 2.4G Wi-Fi x 1, (5G Wi-Fi x 1 Optional), 2.4GHz Hotpointx 1, 5GHz Hotpoint x 1, Bluetooth5.0 x 1, AV input x 1, AV output x 1.
Front Input	<b>Optional Port</b> (VGA input, PC audio, YPbPr input x 1, HDMI output, RF tuner, Microphone in, USB3.0 x 2, USB2.0 x 1, HDMI2.0 x 1, Touch USB x 1, Type-C x 1, Light Sensor x 1
<b>Media Format</b>	
Audio	MP3, WMA, WAV, APE, FLAC, AAC, OGG, M4A,3GPP
Video	H.264,VP8, RV, WMV, AVS, H.263, MPEG4
Picture	JPG, BMP, PNG
<b>Touch Features</b>	
Touch Type	Infra-red touch, 20 Point Touch (Android), 40 Point (Windows)
Glass Hardness	9H (pencil)
Glass Type	4mm Mohs Grade 8 Heat Tempered Glass, Explosion Proof, Anti Glare, etc
Response Time	≤5ms
Touch Object	All opaque objects, such as finger, stylus pens etc.
Touch Resolution	32768 x 32768 pixels
Touch Accuracy	1mm
Tracking Rate	4m/s
Scan Rate	200Hz
MTF	60million touch by each points
Minimum Touch Object	≥ 1MM
<b>Audio</b>	
Speaker	2 x 20W
<b>OPS PC</b>	
CPU	<b>Option</b> : Core i3 / Core i5 / Core i7
RAM	<b>Option</b> : 4GB, 8GB, 16GB
Hard Disk	SSD 128GB~2TB or HDD 500GB~4TB
I/O Port	USB2.0 x 2, USB3.0 x 4, MIC x 1, LINE OUT x 1, RJ45 x 1, VGA x 1, HDMI x 1
<b>Function Features</b>	
Amazing OSD	Humanity beautiful OSD, Touch control, Floating menu
Multiple Control	Support remote control, RS232, Touch control
Touch OSD	Touch Slide From Bottom To Start The Hidden OSD Menu
20 Points Touch	IR 20 point fast response touch
Multiple I/O	Supports HDMI / VGA / CVBS
<b>Physical Features</b>	
Power	AC 100 ~ 240V / 60-50Hz
Consumption	Normal ≤250W
Body Material	Silver & Black Aluminium frame, Black metal cover
Color	Black
Temperature	<b>Work</b> : 0°C ~40°C, <b>Storage</b> : -15° ~ 55°C
Humidity	<b>Work</b> : 20% to 80%, <b>Storage</b> : 20 to 90% (Non Condensing)
Noise	Work Noise <50dBA
Product Dimension	1962.2mm x 1162.9mm x 94.7mm (without wall mounting bracket or Floor Stand)

Weight **Net Weight : 72KG Gross Weight : 87KG**

Package Dimension 2080mm x 200mm x 1270mm

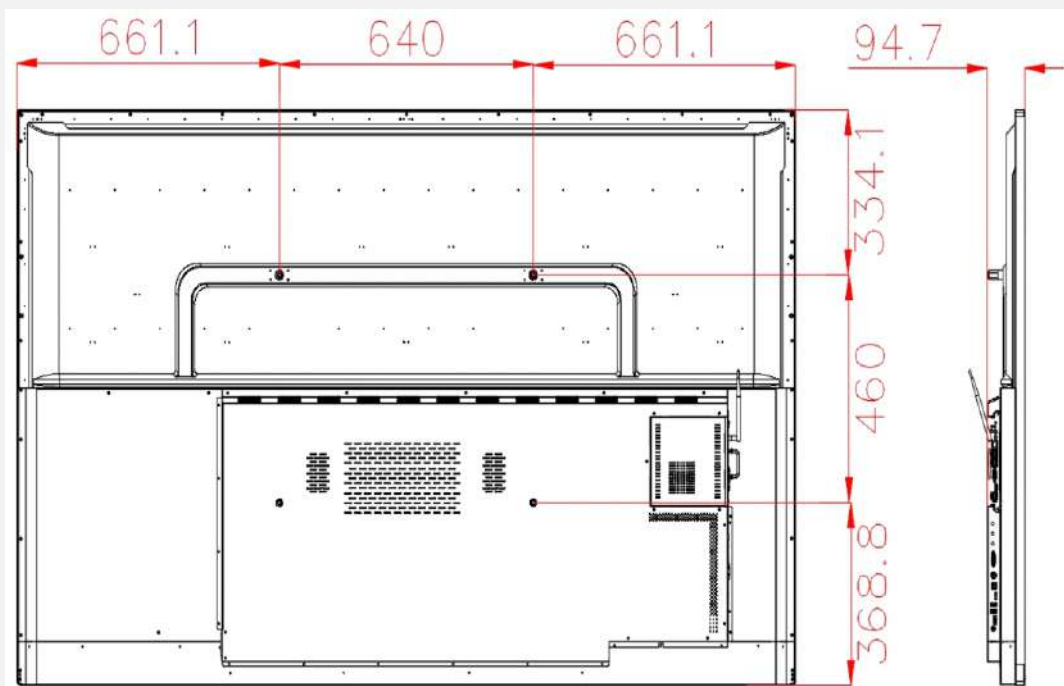
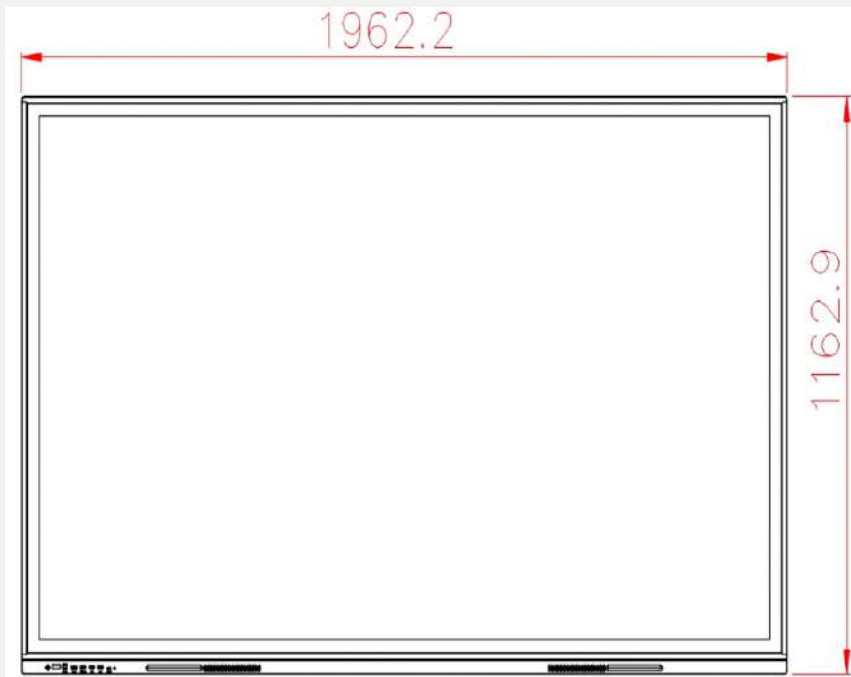
**Other**

Accessories Remote Controller x 1, Power Cord x 1, Magnetic Stylus Pens x 2, Warranty Card x 1,  
Wall Mounting Bracket x 1

Optional Floor Stand Bracket

Certification BIS, CE, FCC, RoHS

**Dimension**



Unit: mm)

\* Note: Product specifications are subject to change without prior notice.

# QUOTATION



DATE : 26 SEPTEMBER 2022

QUOTATION NO : 2022/16

## eLearn Technologies

A-201, Shardha Vihar, Mangalwar Peth,  
Kolhapur, MAHARASHTRA  
Phone - 9890088897

[learntechnologies@gmail.com](mailto:learntechnologies@gmail.com), [kallolips@gmail.com](mailto:kallolips@gmail.com)

### QUOTATION TO

Principal,  
Dayanand College of Commerce  
Latur.

Customer ID: ----NEW

REQUEST DATE	INSTALLATION METHOD	INSTALLATION DATE	PAYMENT TERMS	DUE DATE
25 SEP 2022	ONLINE DEVELOPMENT	15 DAYS AFTER P. O	WITH P. O	1 MONTH

QUANTITY	PRODUCT DESCRIPTION	TOTAL (RS.)
Learning Management System (LMS)	Developing Learning Management System - Moodle With Domain and Cloud Hosting for <b>Total 10 Degree Courses</b> (Domain as per availability and suggestion by Institution) <b>LMS Courses:</b> 1. B.Com Regular (01 Degree Courses) 2. B.Com – Foreign Trade, Computer Application, Banking and Insurance (03 Degree Courses) 3. BCA (Bachelor of Computer Application) 4. B. Voc. (Financial Markets, Cost and Management Acc., Retail Business Mgt.) 03 Degree Courses 5. Bachelor of Business Administration (BBA) 6. Master of Commerce	1,05,000/-

Total Discount

--

Subtotal (Rs.)

1,05,000/-

(Rupees One Lack Five Thousands Only)

**Total(Rs.)**

**1,05,000/-**

### Terms and Conditions

1. Domain once created can't be changed if changed then additional charges will applicable
2. Payment should be made within 15 days
3. Payment D.D / Cheque will be drawn on the name of "ELEARN TECHNOLOGIES" payable at Kolhapur.
4. All dispute subject to Kolhapur Jurisdiction only.
5. AMC will be charged of Rs. 15000/-

Certified that the particulars given above are true and correct .Amount indicated represents the price actually charged

FOR ELEARN TECHNOLOGIES  
ELEARN TECHNOLOGIES  
  
PROPRIETOR

Authorized Signature

## **Package Descriptions**

### **Terms and Conditions of LMS**

1. Domain finalization will be considered as per college need/choice.
2. After completion of one year, the user would be required to pay Annual Maintenance Charges (AMC) Fees as below:  
**Rs. 15,000/ per year for more than two courses/ programmes.**
3. On-site visit for training / troubleshooting is limited to one free visit in a year.
4. One onsite training session will be conducted for orientation of users.
5. 100 % Advance payment with technically and commercially complete Purchase order.
6. Separately Service Agreement and MOU will be done with detail limitations and scope of services.
7. Agreement will be extended for further on mutual understanding and service agreement.
8. GST rate are not included in above mentioned prices and will be applicable accordingly, from 1 July, 2017 onwards.

***Waiting in anticipation of your valued order very soon.***